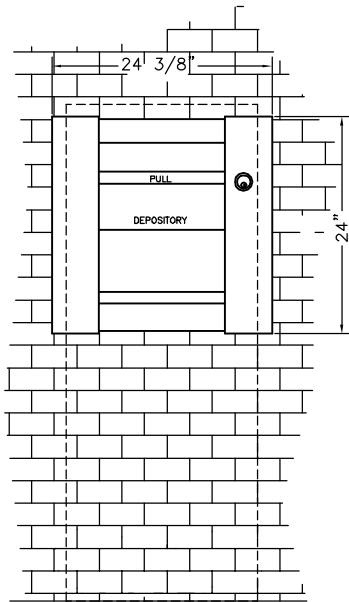
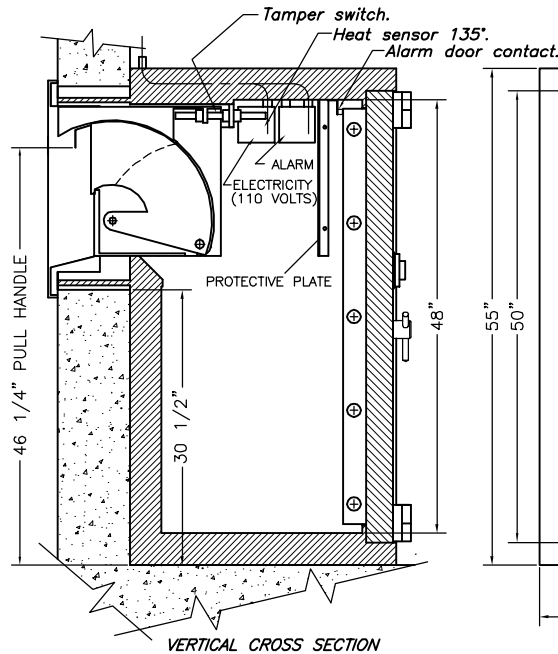


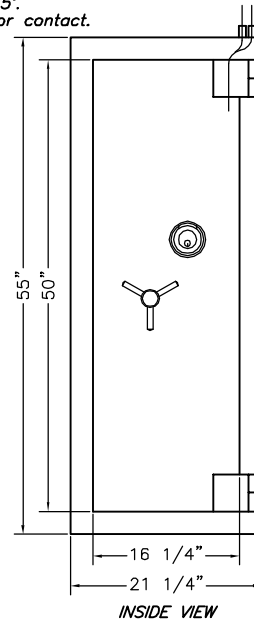
# THIN WALK-UP DEPOSITORY (TL-30)



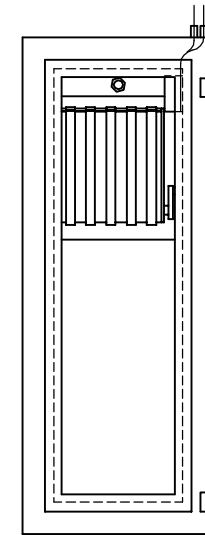
BANK CUSTOMER VIEW



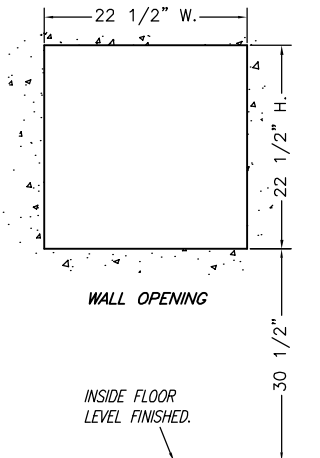
VERTICAL CROSS SECTION



INSIDE VIEW

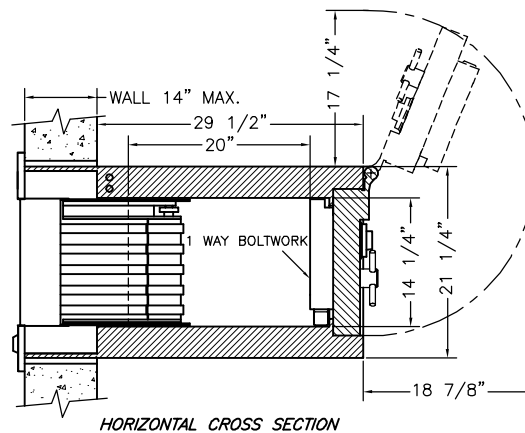


INSIDE VIEW  
WITH MAIN DOOR OMITTED



WALL OPENING

INSIDE FLOOR  
LEVEL FINISHED.



HORIZONTAL CROSS SECTION

## Thin Walk-Up Depository (TL-30)

### CHARACTERISTICS

- Unit for bag deposits.
- The large capacity bag deposit compartment is exposed only when the required key has operated the lock in the depository frame.
- Anti-fishing device.
- Exterior fascia with stainless steel finish.
- Outside lighting system.
- Door of receiving chest is equipped with 1-3 wheel combination locks GR 2M #6630 with keylocking dial.
- Contacts for installation of alarm hook-up.
- Heat sensor 135° (see drawing).
- Tamper switch (see drawing).
- Alarm door contact (see drawing).
- 25 head keys standard.
- Maintenance free head mechanism.
- WEIGHT= 2250 lbs.

### OPTIONS

- Pre-wiring two circuits for alarm system to protect body and door of the receiving chest.
- 2 movement timelock.
- Unit for bag & envelope deposits. The unit can be changed in the field to bag only.
- Customer engraving on outside fascia.
- Available in TL-30x6 model.
- Extra head keys.
- Seismic detector.

(Head trap not available on this model).



Underwriters Laboratories Inc.®

UL LISTED DEPOSITORY HEAD.



TOOL-RESISTANT SAFE  
CLASS TL-30 BURGLARY

ALSO SUITABLE FOR USE AS RECEIVING CHEST  
FOR NIGHT DEPOSITORY

LISTED

SECURIFORT INC.

3	20 11 06	DOOR PROJECTION ADDED.	RM
2	08 05 02	"PULL" IDENT. ADDED ON FASCIA.	RM
1	08 05 02	5 SLIDING BOLTS WAS 3.	RM
NO	DATE	REVISION	BY

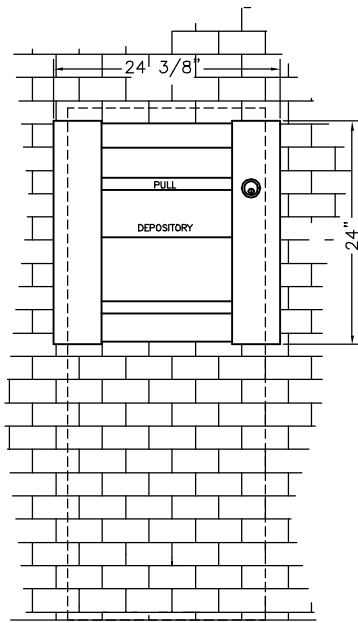


SECURIFORT  
INC

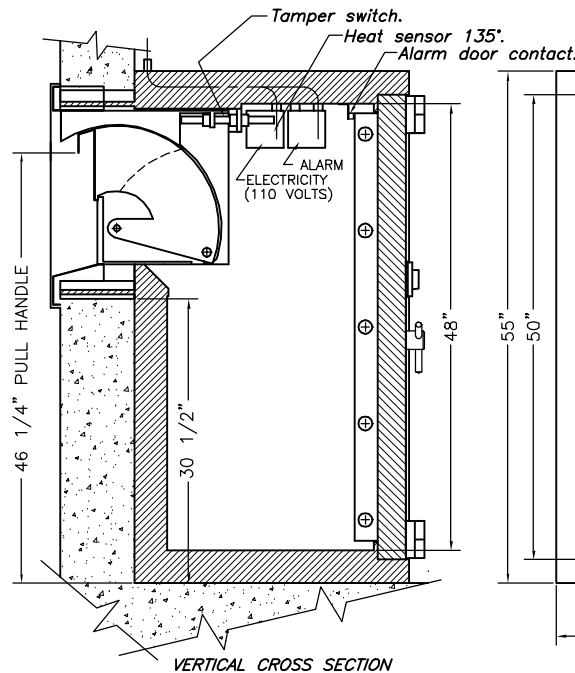
**Thin Walk-Up  
Depository**

DRAWING NO	DRAWN BY	DATE
PC 658	RM	20 12 01

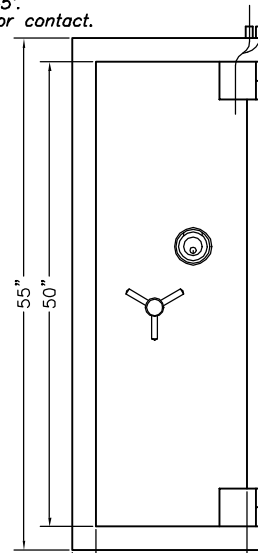
# THIN WALK-UP DEPOSITORY (TL-15)



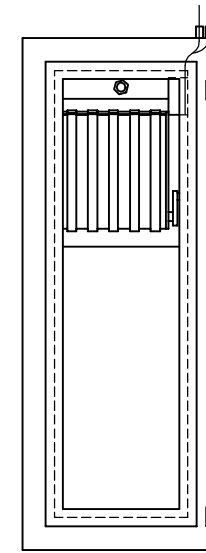
BANK CUSTOMER VIEW



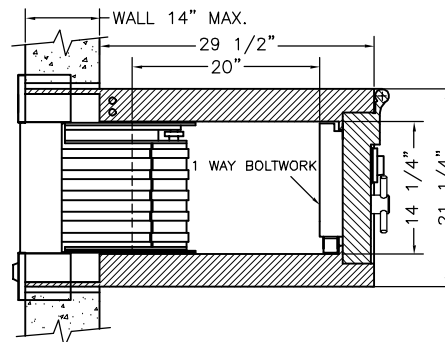
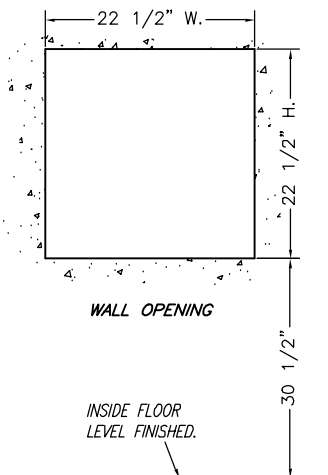
VERTICAL CROSS SECTION



INSIDE VIEW



INSIDE VIEW  
WITH MAIN DOOR OMITTED



HORIZONTAL CROSS SECTION

## Thin Walk-Up Depository (TL-15)

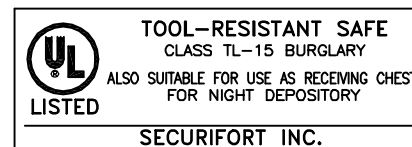
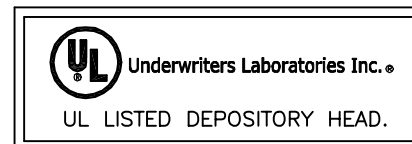
### CHARACTERISTICS

- Unit for bag deposits.
- The large capacity bag deposit compartment is exposed only when the required key has operated the lock in the depository frame.
- Anti-fishing device.
- Exterior fascia with stainless steel finish.
- Outside lighting system.
- Door of receiving chest is equipped with 1-3 wheel combination locks GR 2M #6630 with keylocking dial.
- Contacts for installation of alarm hook-up.
- Heat sensor 135° (see drawing).
- Tamper switch (see drawing).
- Alarm door contact (see drawing).
- 25 head keys standard.
- Maintenance free head mechanism.
- WEIGHT= 2250 lbs.

### OPTIONS

- Pre-wiring two circuits for alarm system to protect body and door of the receiving chest.
- 2 movement timelock.
- Unit for bag & envelope deposits. The unit can be changed in the field to bag only.
- Customer engraving on outside fascia.
- Extra head keys.
- Seismic detector.

(Head trap not available on this model).



## Thin Walk-Up Depository

NO	DATE	REVISION	BY
2	08 05 02	"PULL" IDENT. ADDED ON FASCIA.	RM
1	08 05 02	5 SLIDING BOLTS WAS 3.	RM

DRAWING NO	DRAWN BY	DATE
PC 688	RM	21 12 01

# REGULAR WALK-UP DEPOSITORY (TL-30)

ALARM PACKAGE— ONE TAMPER SWITCH  
ONE HEAT DETECTOR  
ONE DOOR SWITCH & CONTACT  
TWO SEISMIC DETECTOR, ONE ON DOOR  
& ONE ON BODY.

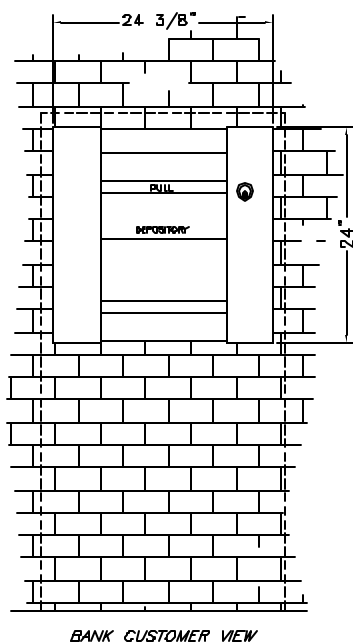
Regular Walk-Up Depository (TL-30)

## CHARACTERISTICS

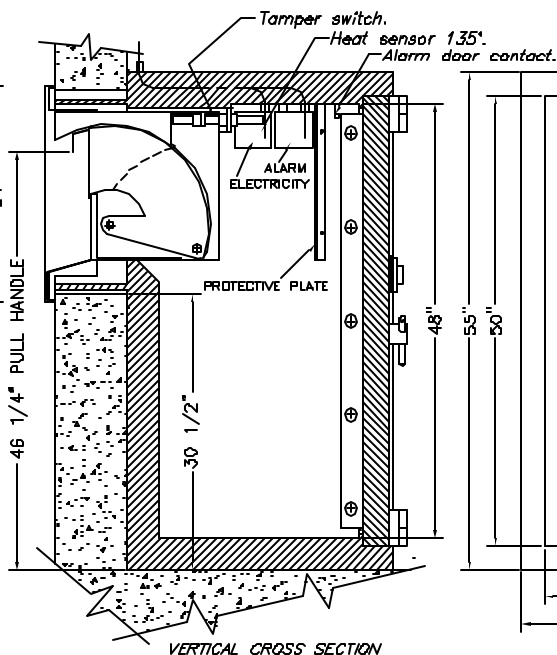
- Unit for bag deposits.
- The large capacity bag deposit compartment is exposed only when the required key has operated the lock in the depository frame.
- Anti-fishing device.
- Exterior fascia with stainless steel finish.
- Outside lighting system.
- Door of receiving chest is equipped with 1-3 wheel combination locks GR 2M #6630 with keylocking dial.
- Contacts for installation of alarm hook-up.
- Heat sensor 135° (see drawing).
- Tamper switch (see drawing).
- Alarm door contact (see drawing).
- 25 head keys standard.
- Maintenance free head mechanism.
- WEIGHT= 2600 lbs.

## OPTIONS

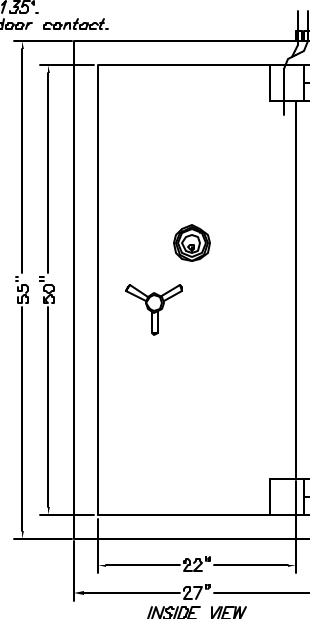
- Pre-wiring two circuits for alarm system to protect body and door of the receiving chest.
- 2 movement timelock.
- Unit for bag & envelope deposits. The unit can be changed in the field to bag only.
- Customer engraving on outside fascia.
- Available in TL-30x6 model.
- Extra head keys.



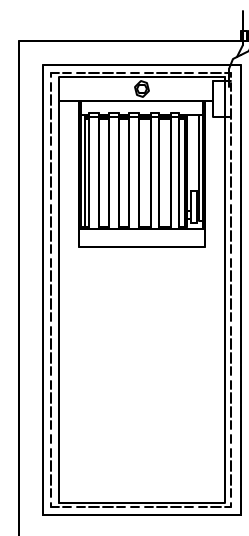
BANK CUSTOMER VIEW



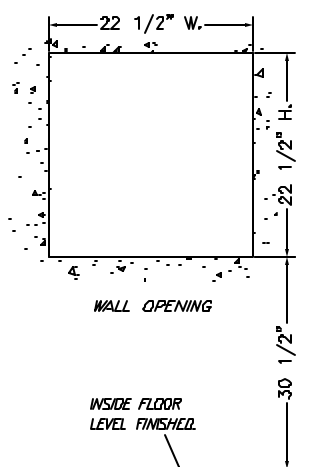
VERTICAL CROSS SECTION



INSIDE VIEW

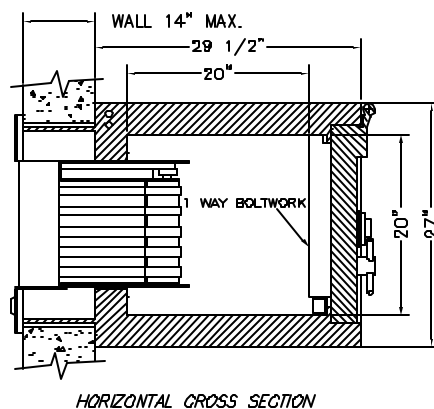


INSIDE VIEW  
WITH MAIN DOOR OMITTED

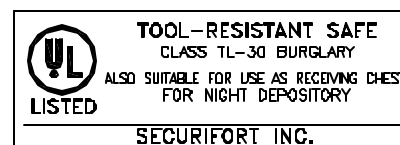


WALL OPENING

INSIDE FLOOR  
LEVEL FINISHED



HORIZONTAL CROSS SECTION



3	26 01 04	ADD 2 SEISMIC DETECTOR	RM
2	08 05 02	"PULL" IDENT. ADDED ON FASCIA.	RM
1	08 05 02	5 SLIDING BOLTS WAS 3.	RM
NO	DATE	REVISION	BY

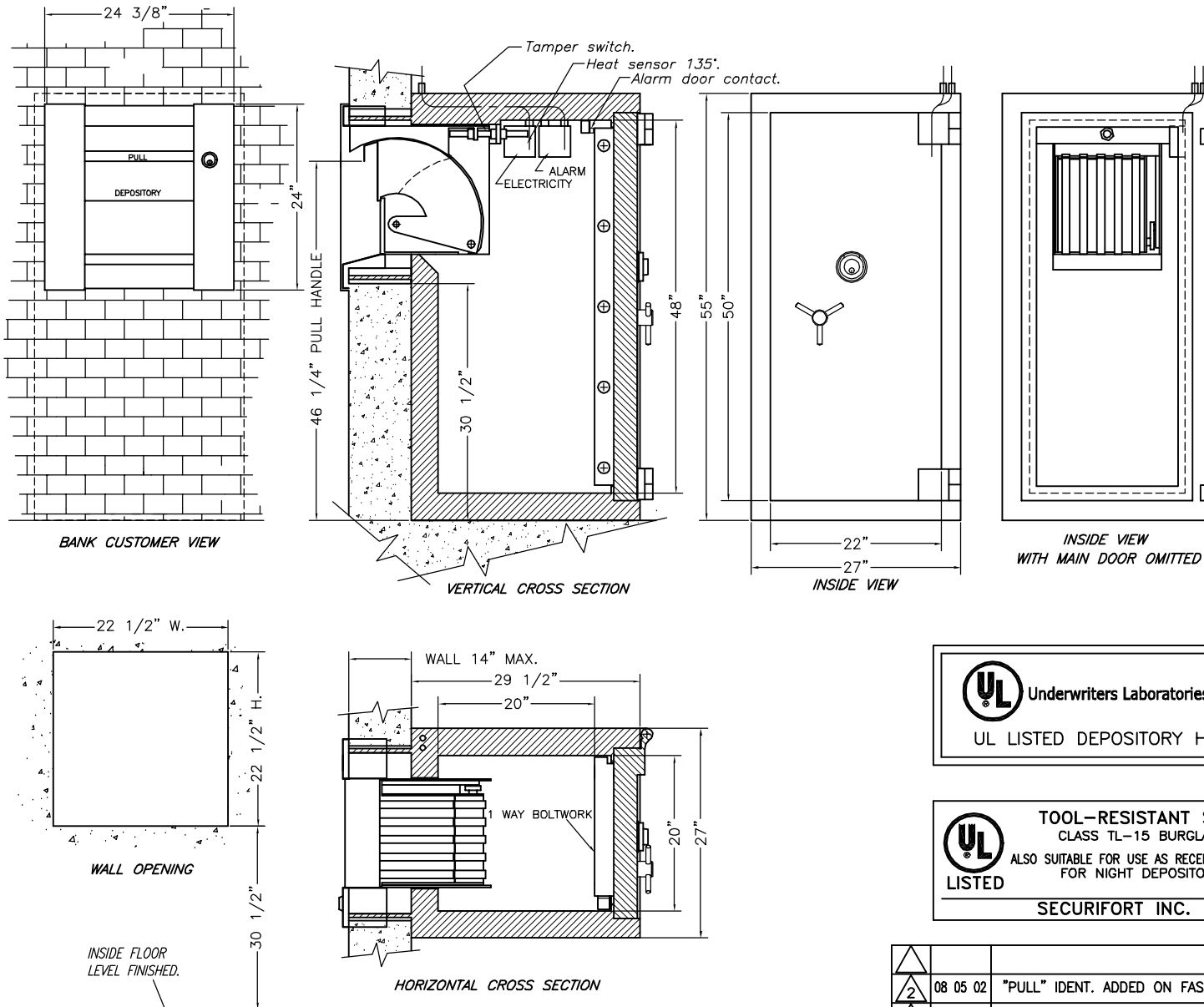
**GREENPOINT BANK**



**Regular Walk-Up  
Depository**

DRAWING NO	OWN BY	DATE
PC 659 R3	RM	20 12 01

# REGULAR WALK-UP DEPOSITORY (TL-15)



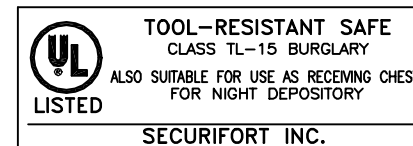
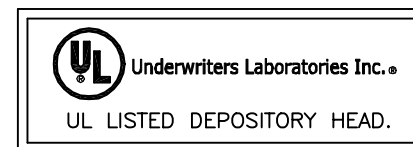
Regular Walk-Up Depository (TL-15)

## CHARACTERISTICS

- Unit for bag deposits.
- The large capacity bag deposit compartment is exposed only when the required key has operated the lock in the depository frame.
- Anti-fishing device.
- Exterior fascia with stainless steel finish.
- Outside lighting system.
- Door of receiving chest is equipped with 1-3 wheel combination locks GR 2M #6630 with keylocking dial.
- Contacts for installation of alarm hook-up.
- Heat sensor 135° (see drawing).
- Tamper switch (see drawing).
- Alarm door contact (see drawing).
- 25 head keys standard.
- Maintenance free head mechanism.
- WEIGHT= 2600 lbs.

## OPTIONS

- Pre-wiring two circuits for alarm system to protect body and door of the receiving chest.
- 2 movement timelock.
- Unit for bag & envelope deposits. The unit can be changed in the field to bag only.
- Customer engraving on outside fascia.
- Extra head keys.
- Seismic detector.

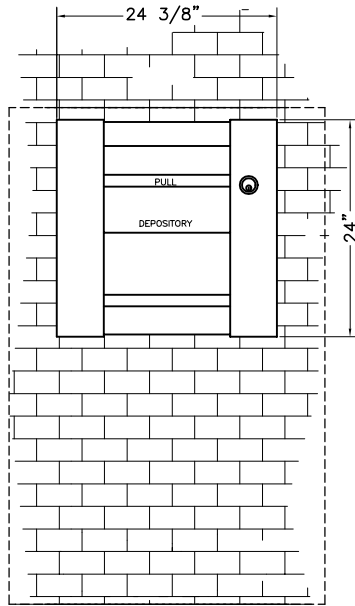


**Regular Walk-Up  
Depository**

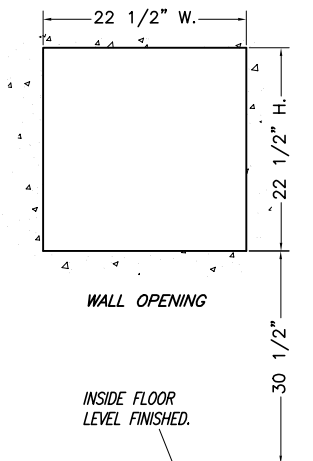
NO	DATE	REVISION	BY
2	08 05 02	"PULL" IDENT. ADDED ON FASCIA.	RM
1	08 05 02	5 SLIDING BOLTS WAS 3.	RM

DRAWING NO	DRAWN BY	DATE
PC 689	RM	21 12 01

# JUMBO WALK-UP DEPOSITORY (TL-30)

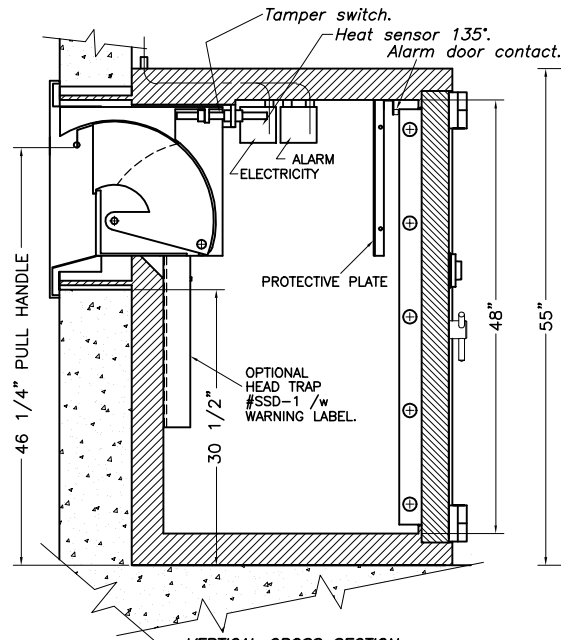


BANK CUSTOMER VIEW

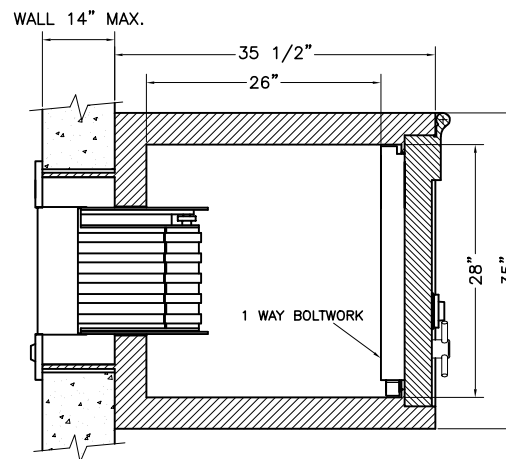


WALL OPENING

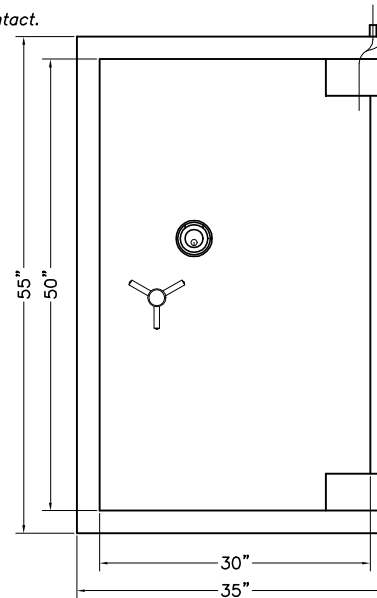
INSIDE FLOOR  
LEVEL FINISHED.



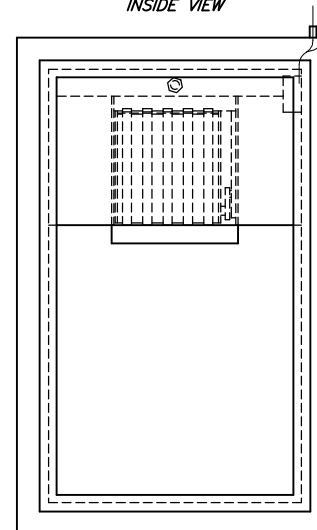
VERTICAL CROSS SECTION



HORIZONTAL CROSS SECTION



INSIDE VIEW



INSIDE VIEW  
WITH MAIN DOOR OMITTED

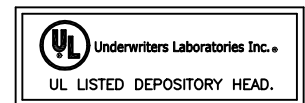
## Jumbo Walk-Up Depository (TL-30)

### CHARACTERISTICS

- Unit for bag deposits.
- The large capacity bag deposit compartment is exposed only when the required key has operated the lock in the depository frame.
- Anti-fishing device.
- Exterior fascia with stainless steel finish.
- Outside lighting system.
- Door of receiving chest is equipped with 1-3 wheel combination locks GR 2M #6630 with keylocking dial.
- Contacts for installation of alarm hook-up.
- Heat sensor 135° (see drawing).
- Tamper switch (see drawing).
- Alarm door contact (see drawing).
- 25 head keys standard.
- Maintenance free head mechanism.
- Door prepared for receive a timelock.
- WEIGHT= 3450 lbs.

### OPTIONS

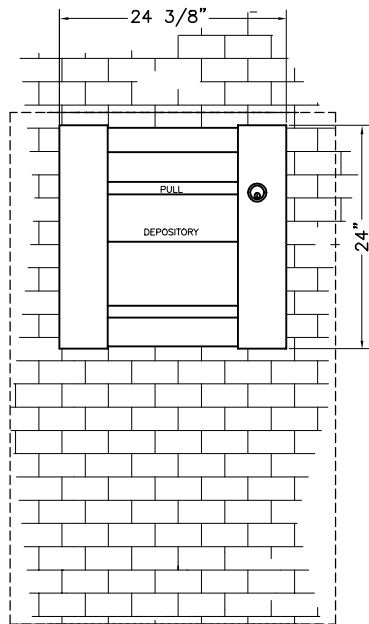
- Pre-wiring two circuits for alarm system to protect body and door of the receiving chest.
- 2 movement timelock.
- Unit for bag & envelope deposits. The unit can be changed in the field to bag only.
- Customer engraving on outside fascia.
- Available in TL-30x6 model.
- Extra head keys.
- Seismic detector.



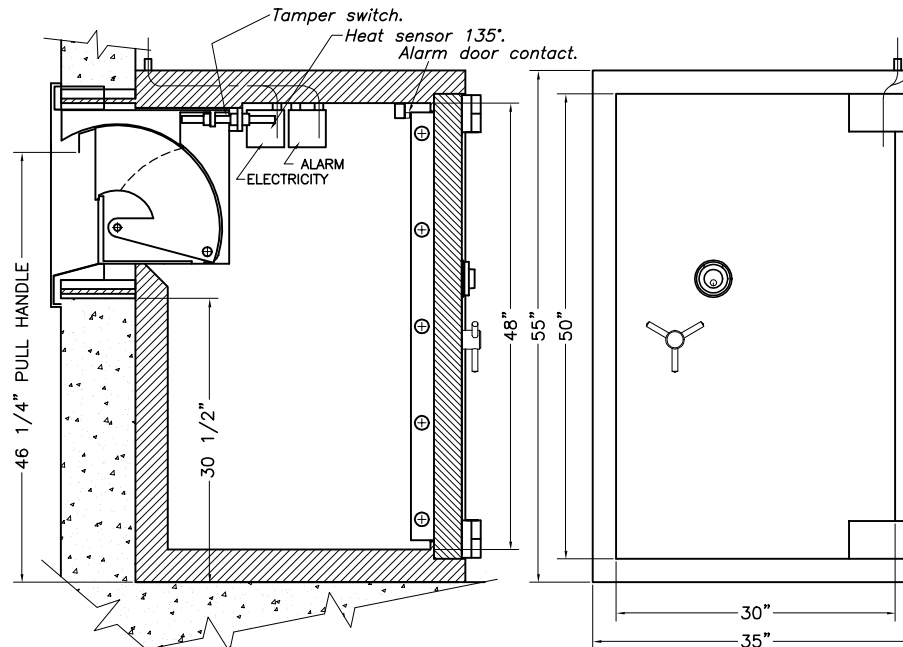
## Jumbo Walk-Up Depository

DRAWING NO.	DRAWN BY	DATE
PC 660	RM	20 12 01

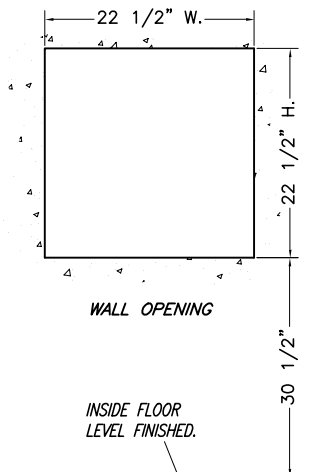
# JUMBO WALK-UP DEPOSITORY (TL-15)



BANK CUSTOMER VIEW

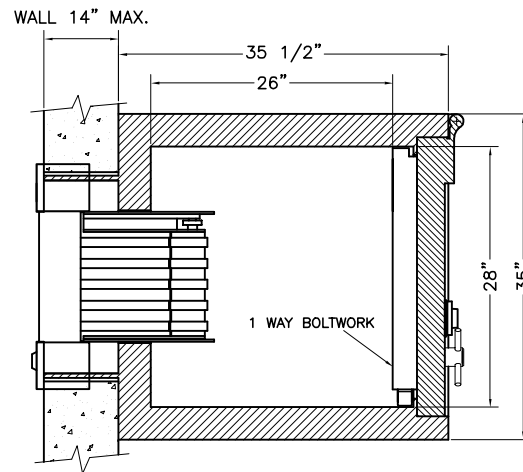


VERTICAL CROSS SECTION

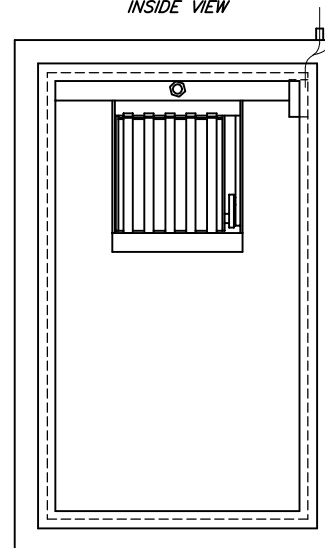


WALL OPENING

INSIDE FLOOR  
LEVEL FINISHED.



HORIZONTAL CROSS SECTION



INSIDE VIEW  
WITH MAIN DOOR OMITTED

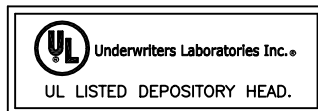
## Jumbo Walk-Up Depository (TL-15)

### CHARACTERISTICS

- Unit for bag deposits.
- The large capacity bag deposit compartment is exposed only when the required key has operated the lock in the depository frame.
- Anti-fishing device.
- Exterior fascia with stainless steel finish.
- Outside lighting system.
- Door of receiving chest is equipped with 1-3 wheel combination locks GR 2M #6630 with keylocking dial.
- Contacts for installation of alarm hook-up.
- Heat sensor 135° (see drawing).
- Tamper switch (see drawing).
- Alarm door contact (see drawing).
- 25 head keys standard.
- Maintenance free head mechanism.
- WEIGHT= 3450 lbs.

### OPTIONS

- Pre-wiring two circuits for alarm system to protect body and door of the receiving chest.
- 2 movement timelock.
- Unit for bag & envelope deposits. The unit can be changed in the field to bag only.
- Customer engraving on outside fascia.
- Extra head keys.
- Seismic detector.

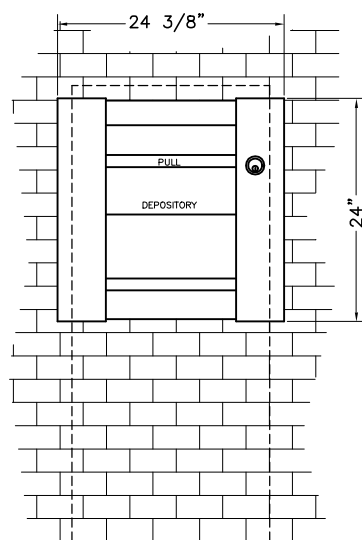


## Jumbo Walk-Up Depository

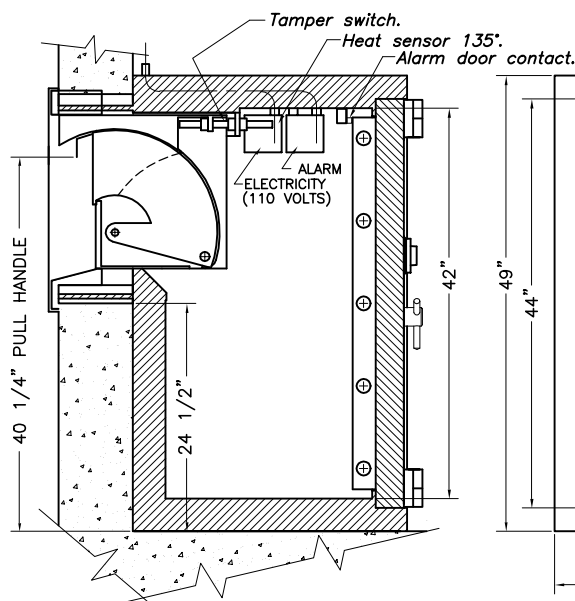
DRAWING NO.		SCALE	
PC 690		1/8" = 1"	
DATE	DRAWN BY	APP ED BY	
21 12 01	RM		

NO	DATE	REVISION	BY
2	08 05 02	"PULL" IDENT. ADDED ON FASCIA.	RM
1	08 05 02	5 SLIDING BOLTS WAS 3.	RM

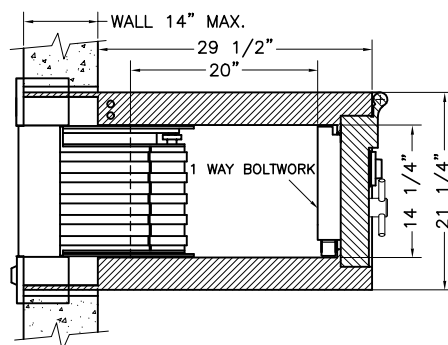
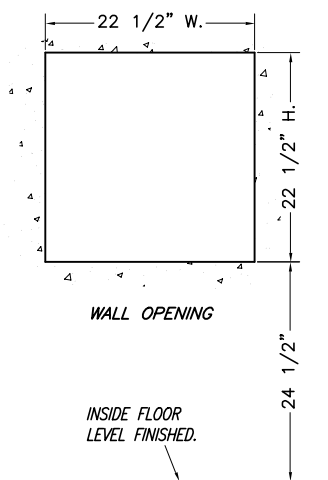
# THIN DRIVE-UP DEPOSITORY (TL-30)



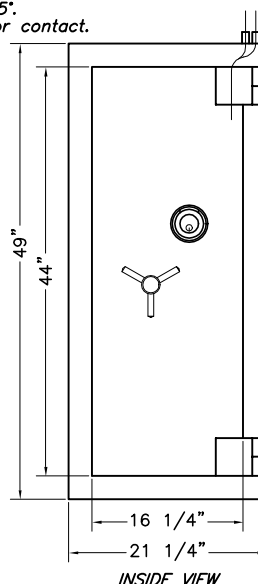
BANK CUSTOMER VIEW



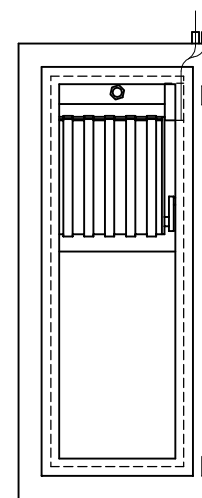
VERTICAL CROSS SECTION



HORIZONTAL CROSS SECTION



INSIDE VIEW



INSIDE VIEW  
WITH MAIN DOOR OMITTED

## Thin Drive-Up Depository (TL-30)

### CHARACTERISTICS

- Unit for bag deposits.
- The large capacity bag deposit compartment is exposed only when the required key has operated the lock in the depository frame.
- Anti-fishing device.
- Exterior fascia with stainless steel finish.
- Outside lighting system.
- Door of receiving chest is equipped with 1-3 wheel combination locks GR 2M #6630 with keylocking dial.
- Contacts for installation of alarm hook-up.
- Heat sensor 135° (see drawing).
- Tamper switch (see drawing).
- Alarm door contact (see drawing).
- 25 head keys standard.
- Maintenance free head mechanism.
- WEIGHT= 2050 lbs.

### OPTIONS

- Pre-wiring two circuits for alarm system to protect body and door of the receiving chest.
- 2 movement timelock.
- Unit for bag & envelope deposits. The unit can be changed in the field to bag only.
- Customer engraving on outside fascia.
- Available in TL-30x6 model.
- Extra head keys.
- Seismic detector.

(Head trap not available on this model).



Underwriters Laboratories Inc.®

UL LISTED DEPOSITORY HEAD.



TOOL-RESISTANT SAFE  
CLASS TL-30 BURGLARY

ALSO SUITABLE FOR USE AS RECEIVING CHEST  
FOR NIGHT DEPOSITORY

SECURIFORT INC.



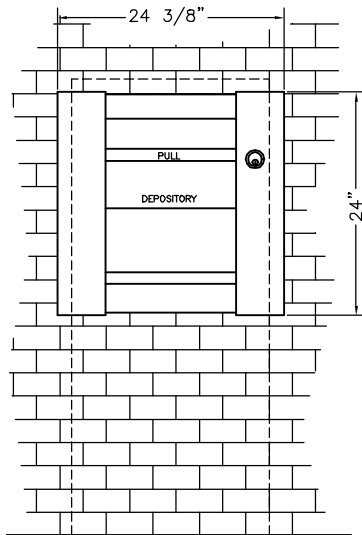
SECURIFORT  
INC

## Thin Drive-Up Depository

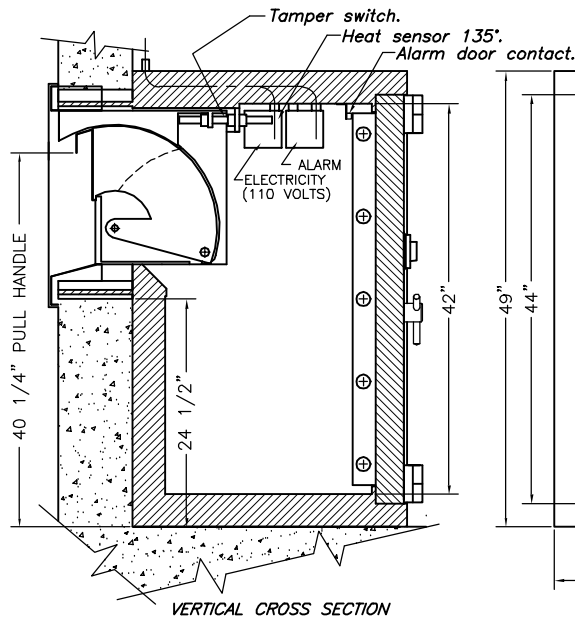
NO	DATE	REVISION	BY
2	08 05 02	"PULL" IDENT. ADDED ON FASCIA.	RM
1	08 05 02	5 SLIDING BOLTS WAS 3.	RM

DRAWING NO.		SCALE	
PC 661		1/8" = 1"	
DATE	DRAWN BY	APP ED BY	
20 12 01	RM		

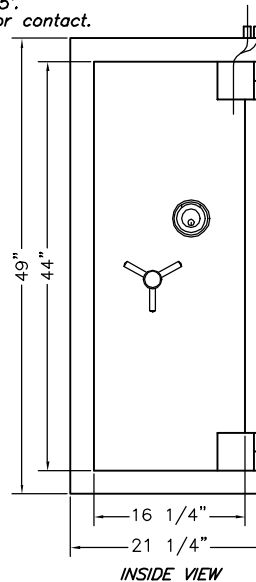
# THIN DRIVE-UP DEPOSITORY (TL-15)



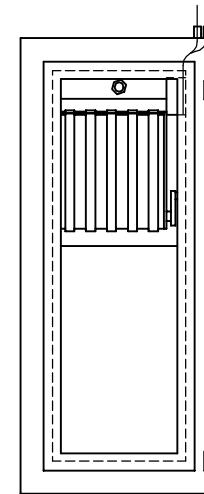
BANK CUSTOMER VIEW



VERTICAL CROSS SECTION



INSIDE VIEW



INSIDE VIEW  
WITH MAIN DOOR OMITTED

## Thin Drive-Up Depository (TL-15)

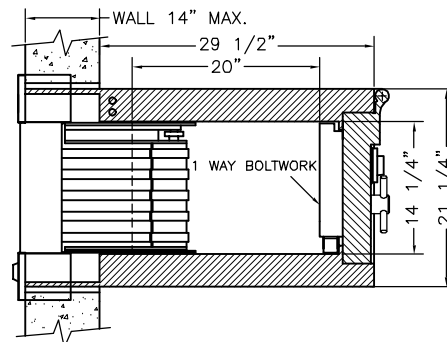
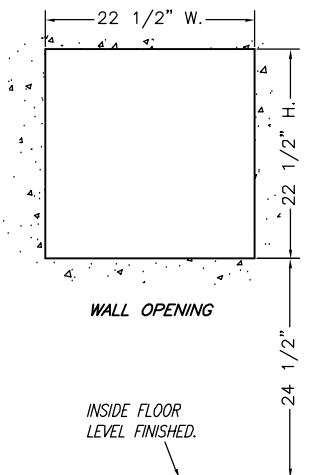
### CHARACTERISTICS

- Unit for bag deposits.
- The large capacity bag deposit compartment is exposed only when the required key has operated the lock in the depository frame.
- Anti-fishing device.
- Exterior fascia with stainless steel finish.
- Outside lighting system.
- Door of receiving chest is equipped with 1-3 wheel combination locks GR 2M #6630 with keylocking dial.
- Contacts for installation of alarm hook-up.
- Heat sensor 135° (see drawing).
- Tamper switch (see drawing).
- Alarm door contact (see drawing).
- 25 head keys standard.
- Maintenance free head mechanism.
- WEIGHT= 2050 lbs.

### OPTIONS

- Pre-wiring two circuits for alarm system to protect body and door of the receiving chest.
- 2 movement timelock.
- Unit for bag & envelope deposits. The unit can be changed in the field to bag only.
- Customer engraving on outside fascia.
- Extra head keys.
- Seismic detector.

(Head trap not available on this model).



HORIZONTAL CROSS SECTION



Underwriters Laboratories Inc.®

UL LISTED DEPOSITORY HEAD.



TOOL-RESISTANT SAFE  
CLASS TL-15 BURGLARY

ALSO SUITABLE FOR USE AS RECEIVING CHEST  
FOR NIGHT DEPOSITORY

SECURIFORT INC.

△			
2	08 05 02	"PULL" IDENT. ADDED ON FASCIA.	RM
1	08 05 02	5 SLIDING BOLTS WAS 3.	RM
NO	DATE	REVISION	BY



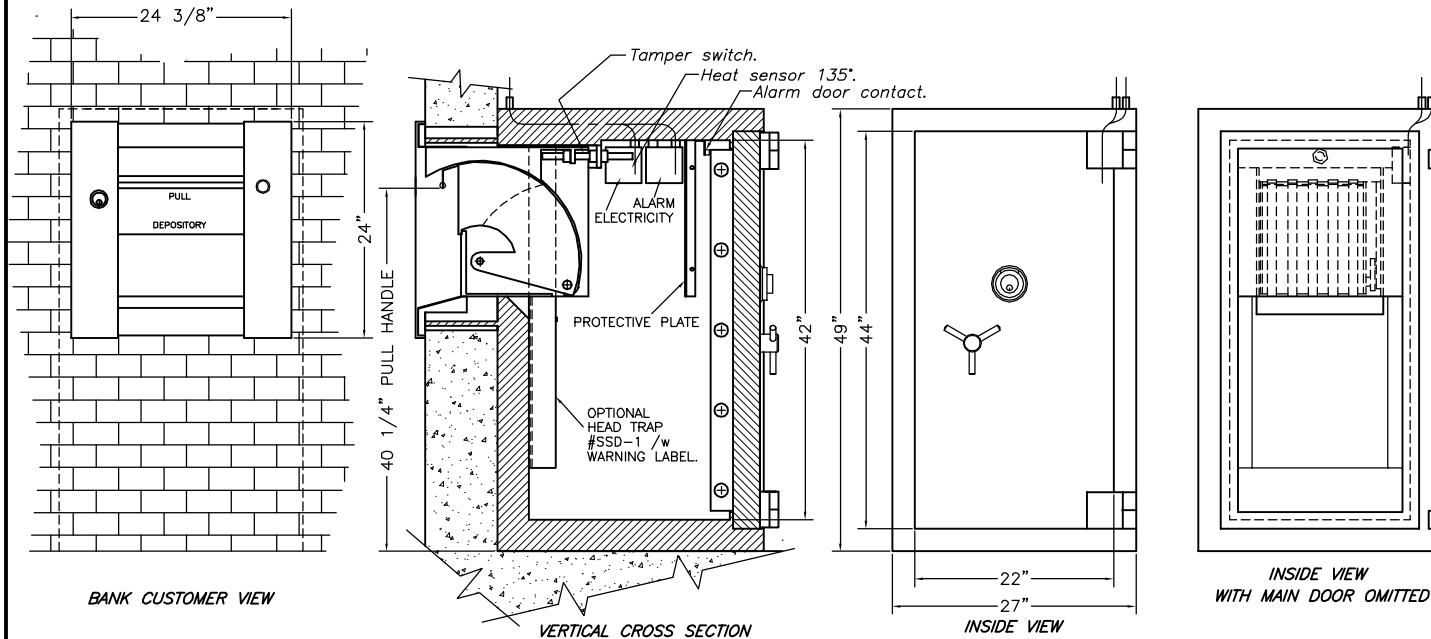
SECURIFORT  
INC

## Thin Drive-Up Depository

DRAWING NO	DRAWN BY	DATE
PC 691	RM	21 12 01



# REGULAR DRIVE-UP DEPOSITORY (TL-30)



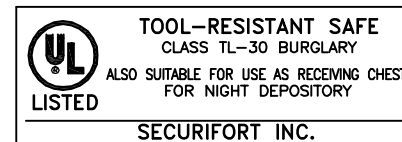
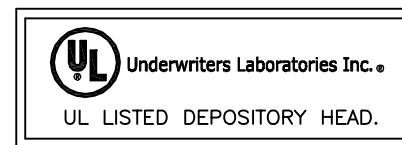
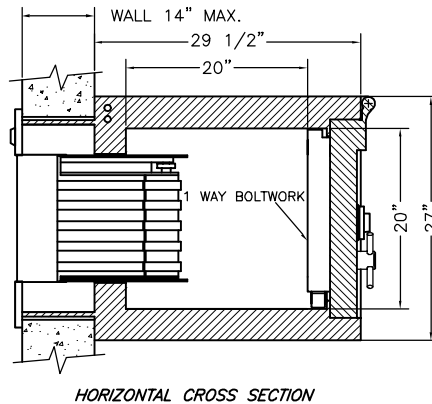
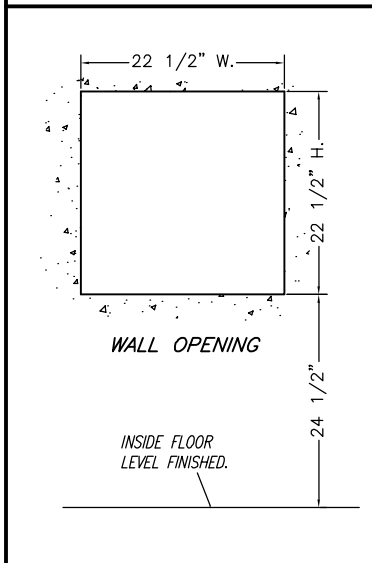
Regular Drive-Up Depository (TL-30)

## CHARACTERISTICS

- Unit for bag & envelope deposits.
- The large capacity bag deposit compartment is exposed only when the required key has operated the lock in the depository frame.
- Anti-fishing device.
- Exterior fascia with stainless steel finish.
- Outside lighting system with spare bulb.
- Door of receiving chest is equipped with 1-3 wheel combination locks GR 2M #6630 with keylocking dial.
- Contacts for installation of alarm hook-up.
- Heat sensor 135° (see drawing).
- Tamper switch (see drawing).
- Alarm door contact (see drawing).
- 25 head keys standard.
- Maintenance free head mechanism.
- Door prepared for receive a timelock.
- WEIGHT= 2370 lbs.

## OPTIONS

- Pre-wiring two circuits for alarm system to protect body and door of the receiving chest.
- 2 movement timelock.
- Customer engraving on outside fascia.
- Available in TL-30x6 model.
- Extra head keys.
- Seismic detector.



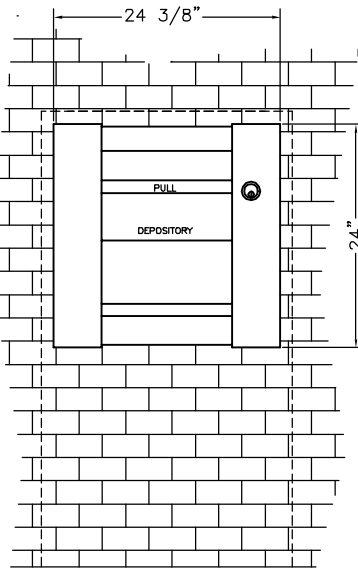
3	27 01 03	DETAILS ADDED	RM
2	08 05 02	"PULL" IDENT. ADDED ON FASCIA.	RM
1	08 05 02	5 SLIDING BOLTS WAS 3.	RM
NO	DATE	REVISION	BY



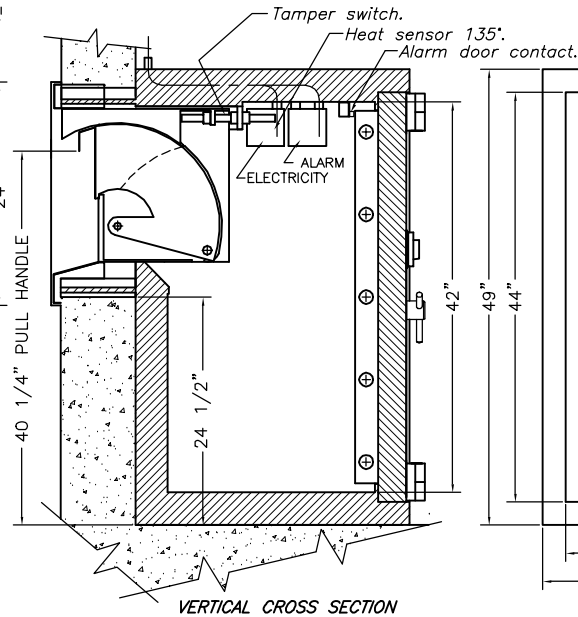
**Regular Drive-Up Depository**

DRAWING NO	DRAWN BY	DATE
PC 662 R3	RM	20 12 01

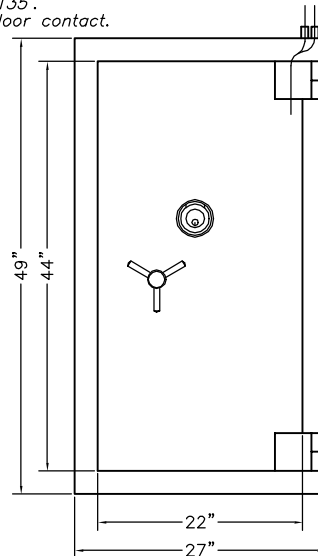
# REGULAR DRIVE-UP DEPOSITORY (TL-15)



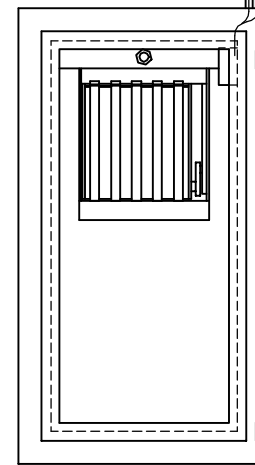
BANK CUSTOMER VIEW



VERTICAL CROSS SECTION



INSIDE VIEW



INSIDE VIEW  
WITH MAIN DOOR OMITTED

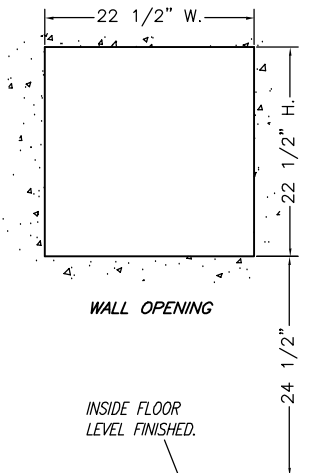
## Regular Drive-Up Depository (TL-15)

### CHARACTERISTICS

- Unit for bag deposits.
- The large capacity bag deposit compartment is exposed only when the required key has operated the lock in the depository frame.
- Anti-fishing device.
- Exterior fascia with stainless steel finish.
- Outside lighting system.
- Door of receiving chest is equipped with 1-3 wheel combination locks GR 2M #6630 with keylocking dial.
- Contacts for installation of alarm hook-up.
- Heat sensor 135° (see drawing).
- Tamper switch (see drawing).
- Alarm door contact (see drawing).
- 25 head keys standard.
- Maintenance free head mechanism.
- WEIGHT= 2370 lbs.

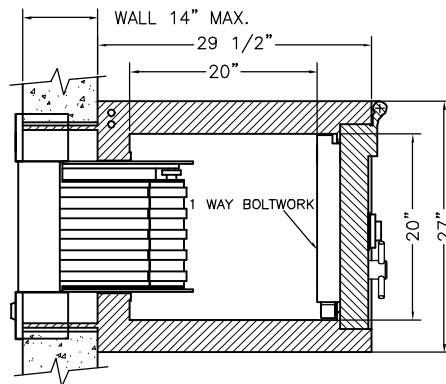
### OPTIONS

- Pre-wiring two circuits for alarm system to protect body and door of the receiving chest.
- 2 movement timelock.
- Unit for bag & envelope deposits. The unit can be changed in the field to bag only.
- Customer engraving on outside fascia.
- Extra head keys.
- Seismic detector.



WALL OPENING

INSIDE FLOOR  
LEVEL FINISHED.



HORIZONTAL CROSS SECTION



Underwriters Laboratories Inc.®

UL LISTED DEPOSITORY HEAD.



TOOL-RESISTANT SAFE  
CLASS TL-15 BURGLARY  
ALSO SUITABLE FOR USE AS RECEIVING CHEST  
FOR NIGHT DEPOSITORY

SECURIFORT INC.



SECURIFORT  
INC

Regular Drive-Up  
Depository

NO	DATE	REVISION	BY
2	08 05 02	"PULL" IDENT. ADDED ON FASCIA.	RM
1	08 05 02	5 SLIDING BOLTS WAS 3.	RM

DRAWING NO	DRAWN BY	DATE
PC 692	RM	21 12 01

# JUMBO DRIVE-UP DEPOSITORY (TL-30)

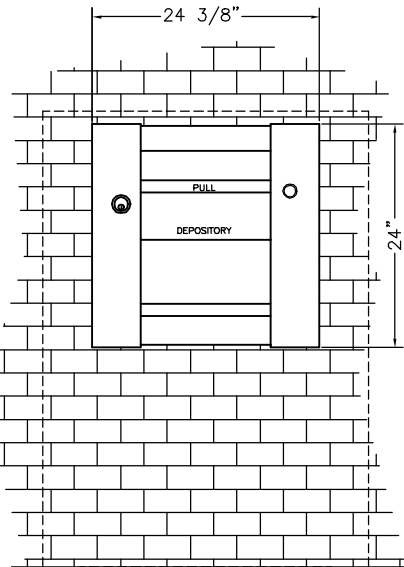
Jumbo Drive-Up Depository (TL-30)

## CHARACTERISTICS

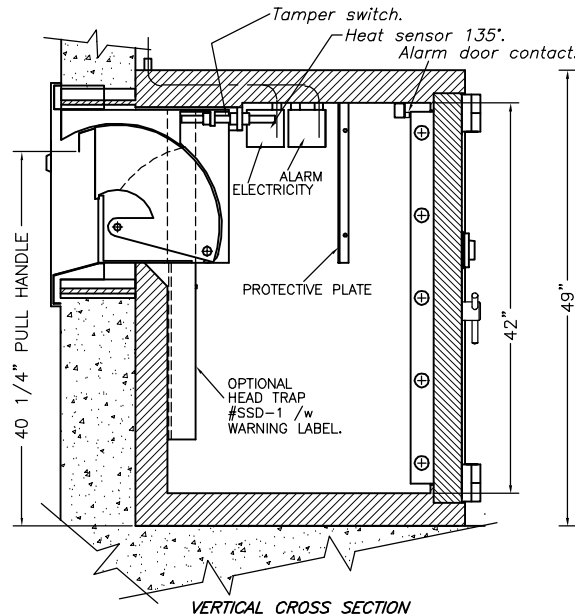
- Unit for bag & envelope deposits.
- The large capacity bag deposit compartment is exposed only when the required key has operated the lock in the depository frame.
- Anti-fishing device.
- Exterior fascia with stainless steel finish.
- Outside lighting system with spare bulb.
- Door of receiving chest is equipped with 1-3 wheel combination locks GR 2M #6630 with keylocking dial.
- Contacts for installation of alarm hook-up.
- Heat sensor 135° (see drawing).
- Tamper switch (see drawing).
- Alarm door contact (see drawing).
- 100 head keys standard.
- Maintenance free head mechanism.
- Door prepared for receive a timelock.
- WEIGHT= 3150 lbs.

## OPTIONS

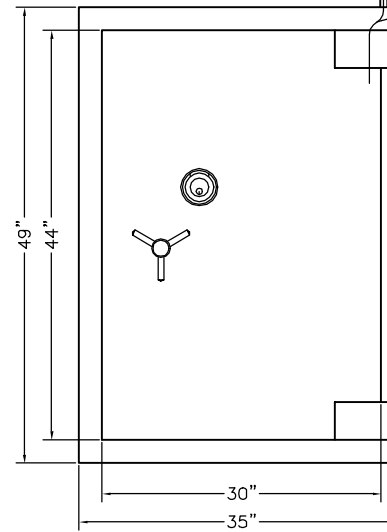
- Pre-wiring two circuits for alarm system to protect body and door of the receiving chest.
- 2 movement timelock.
- Customer engraving on outside fascia.
- Available in TL-30x6 model.
- Extra head keys.
- Seismic detector.



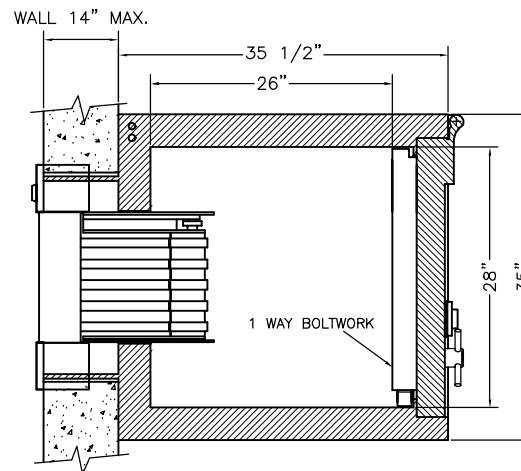
BANK CUSTOMER VIEW



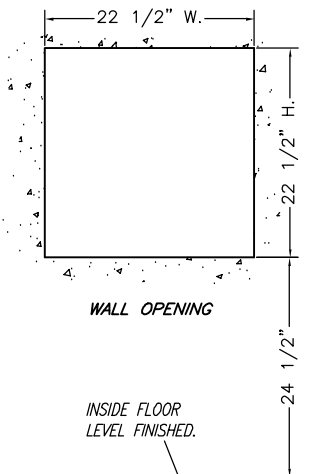
VERTICAL CROSS SECTION



INSIDE VIEW

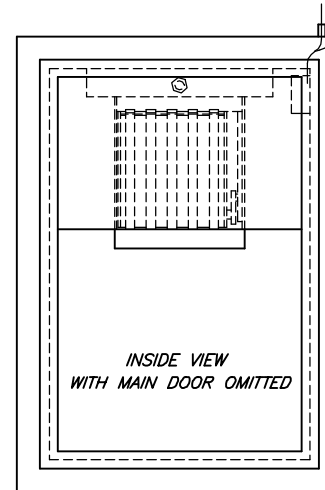


HORIZONTAL CROSS SECTION

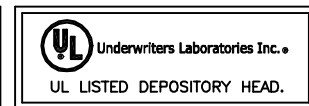
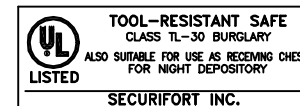


WALL OPENING

INSIDE FLOOR  
LEVEL FINISHED.



INSIDE VIEW  
WITH MAIN DOOR OMITTED

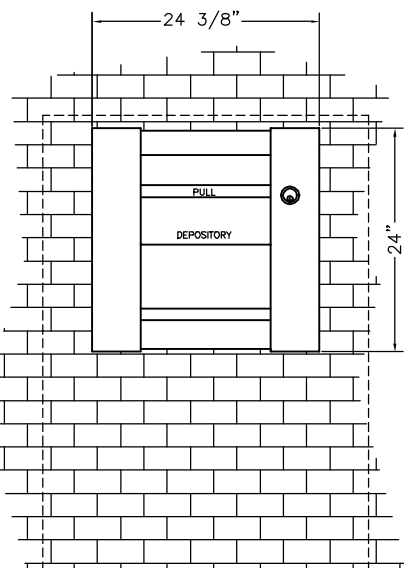


## Jumbo Drive-Up Depository

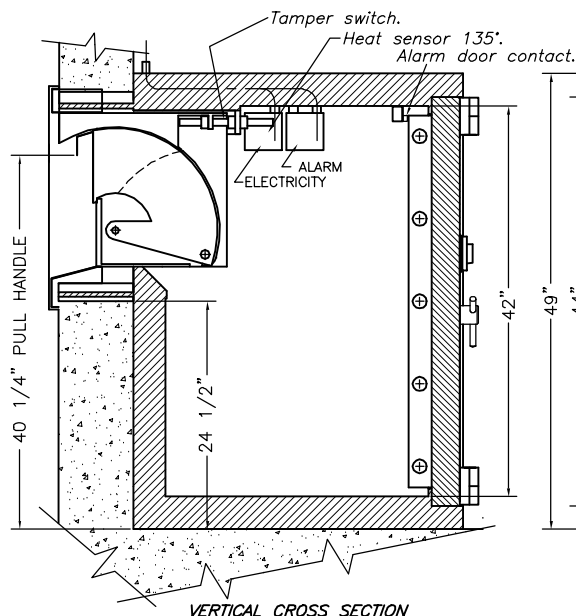
3	27 01 03	DETAILS ADDED.	RM
2	08 05 02	"PULL" IDENT. ADDED ON FASCIA.	RM
1	08 05 02	5 SLIDING BOLTS WAS 3.	RM
NO	DATE	REVISION	BY

DRAWING NO	DRAWN BY	DATE
PC 663 R3	RM	20 12 01

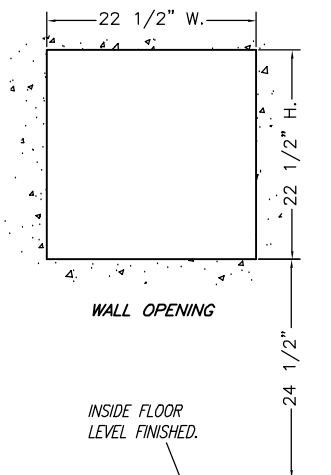
# JUMBO DRIVE-UP DEPOSITORY (TL-15)



BANK CUSTOMER VIEW

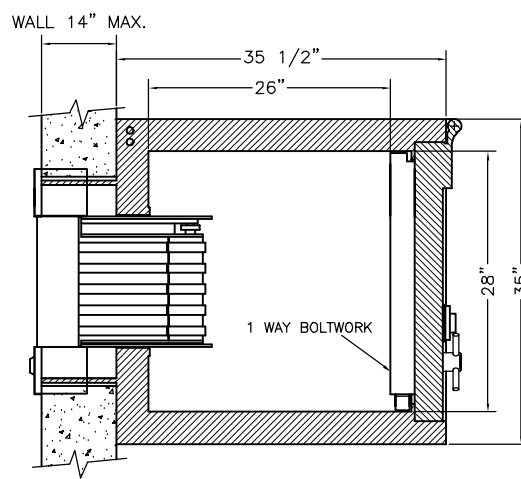


VERTICAL CROSS SECTION

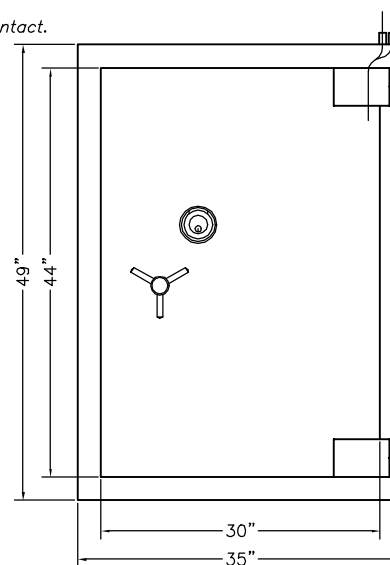


WALL OPENING

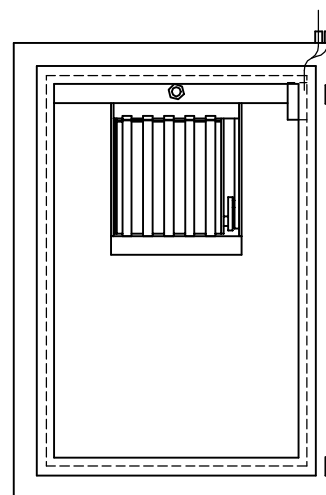
INSIDE FLOOR  
LEVEL FINISHED.



HORIZONTAL CROSS SECTION



INSIDE VIEW



INSIDE VIEW  
WITH MAIN DOOR OMITTED

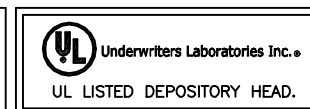
## Jumbo Drive-Up Depository (TL-15)

### CHARACTERISTICS

- Unit for bag deposits.
- The large capacity bag deposit compartment is exposed only when the required key has operated the lock in the depository frame.
- Anti-fishing device.
- Exterior fascia with stainless steel finish.
- Outside lighting system.
- Door of receiving chest is equipped with 1-3 wheel combination locks GR 2M #6630 with keylocking dial.
- Contacts for installation of alarm hook-up.
- Heat sensor 135° (see drawing).
- Tamper switch (see drawing).
- Alarm door contact (see drawing).
- 25 head keys standard.
- Maintenance free head mechanism.
- WEIGHT= 3150 lbs.

### OPTIONS

- Pre-wiring two circuits for alarm system to protect body and door of the receiving chest.
- 2 movement timelock.
- Unit for bag & envelope deposits. The unit can be changed in the field to bag only.
- Customer engraving on outside fascia.
- Extra head keys.
- Seismic detector.

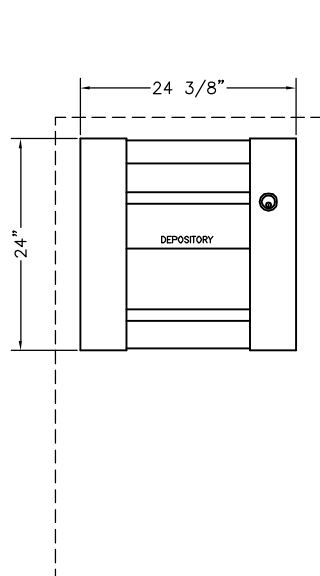


**SECURIFORT**  
INC

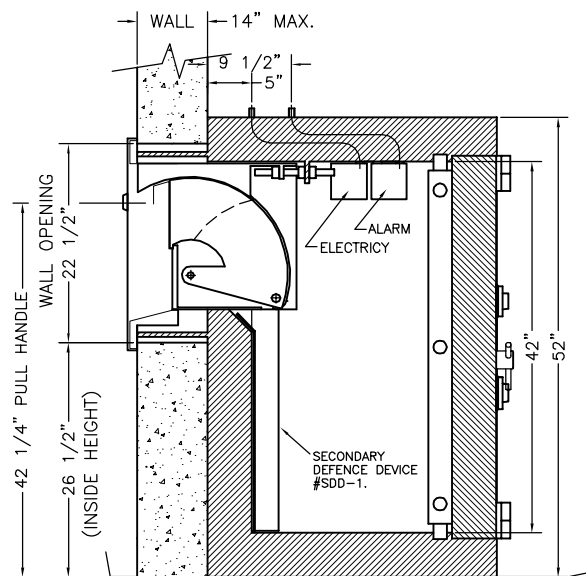
**Jumbo Drive-Up  
Depository**

DRAWING NO.	DRAWN BY	DATE
PC 693	RM	21 12 01

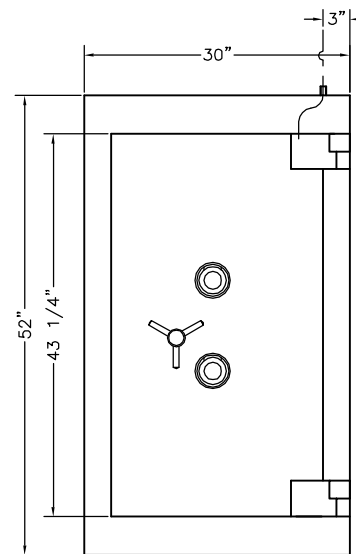
NO	DATE	REVISION	BY
2	08 05 02	"PULL" IDENT. ADDED ON FASCIA.	RM
1	08 05 02	5 SLIDING BOLTS WAS 3.	RM



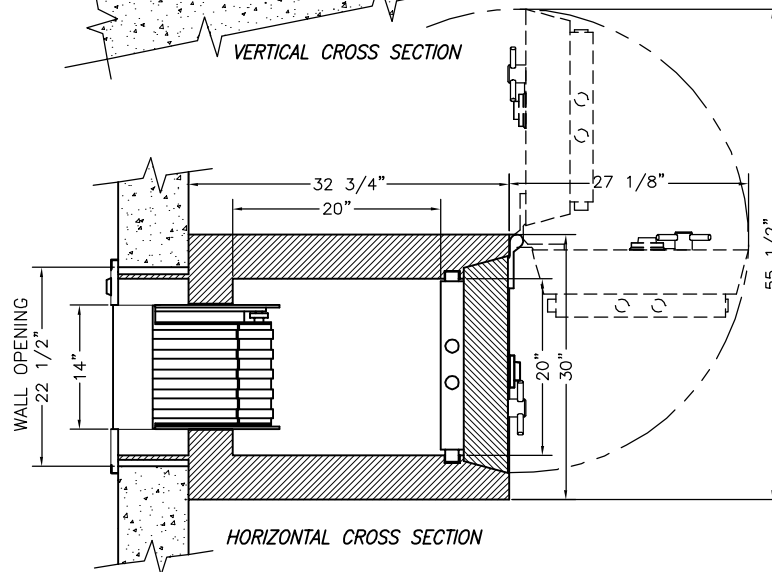
OUTSIDE FASCIA



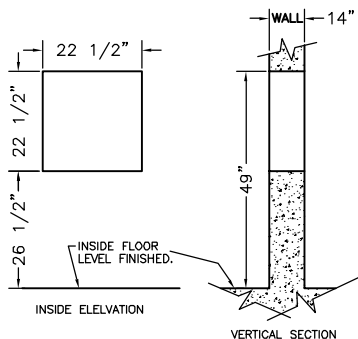
VERTICAL CROSS SECTION



INSIDE VIEW



HORIZONTAL CROSS SECTION



WALL OPENING



Underwriters Laboratories Inc.

UL LISTED DEPOSITORY HEAD.



6 SIDED TORCH & TOOL PROTECTION.

CLASS C1 (15 min.)  
CLASS C2 (30 min.)

## NIGHT DEPOSITORY MODELS SND-C1 or C2

### CHARACTERISTICS

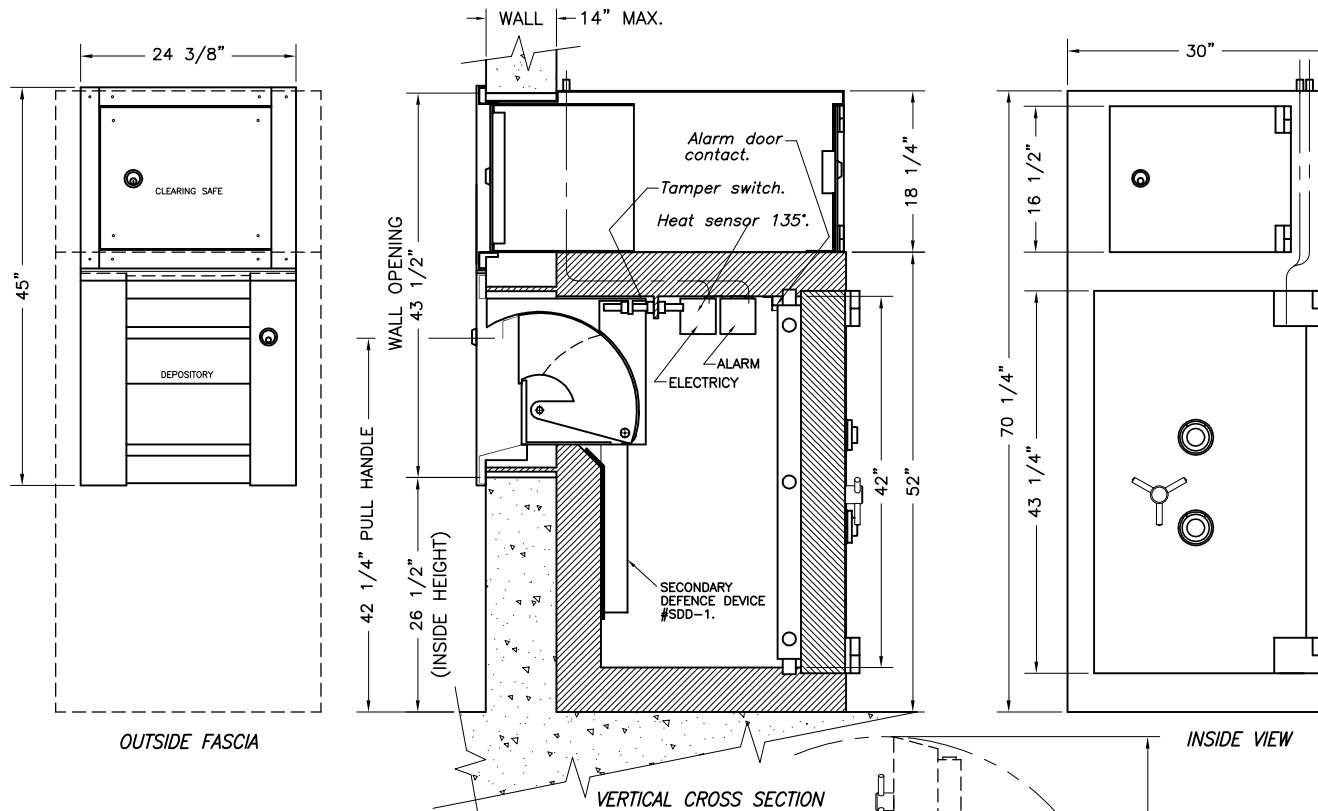
- Unit for wallet deposits.
- The large capacity bag deposit compartment is exposed only when the required key has operated the lock in the depository frame.
- Anti-fishing device.
- Exterior fascia with stainless steel finish.
- Outside lighting system.
- The door and walls of receiving chest are 5" thick, steel & alloy.
- Door of receiving chest is equipped with 2-4 wheel combination locks GR2M with spyproof dial.
- Contacts for installation of alarm hook-up.
- Additional alarm protection on fascia.
- ULC listed night depository head, (see DWG #PB-451).

### OPTIONAL EQUIPMENT

1. Pre-wiring two circuits for alarm system to protect body and door of the receiving chest.
- 2 or 3 movements timelock.
- Clearing safe #CSTR (see DWG #PB-500).
- Wallets & envelopes functions.
- Customer engraving on outside fascia.
- 2-4 wheel combination lock (indirect drive).
- Head trap #SDD-1, (see DWG #PB-482).
- Extra head keys.

MODELS	weight C1	weight C2	cubic capacity
SND 25 head keys	3380 lbs.	3580 lbs.	5,9

4	08 06 05	DOOR SWING WAS MODIFIED.	RM
3	15 08 01	DOOR SWING ADDED	RM
2	15 08 01	2-3 wheel GR 2M was 2-4 wheel	RM
1	07 04 99	ADD. (PRE WIRING) OPT. EQU.	RM
NO	DATE	REVISION	BY
TITLE NIGHT DEPOSITORY			
APPLICATION ULC #S330-93. CLASS C1 & C2.			
DATE 10 10 97		DRAWN BY R M	APP ED BY SCALE 3/32 = 1
PART NO SND C1 & C2		DRAWING NO PB 549	



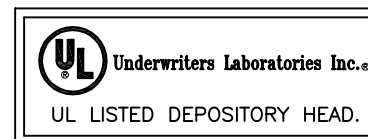
NIGHT DEPOSITORY MODELS SND-C1 or C2  
c/w CLEARING SAFE.

#### CHARACTERISTICS

- Unit for wallet deposits.
- The large capacity bag deposit compartment is exposed only when the required key has operated the lock in the depository frame.
- Anti-fishing device.
- Exterior fascia with stainless steel finish.
- Outside lighting system.
- The door and walls of receiving chest are 5" thick, steel & alloy.
- Door of receiving chest is equipped with 2-4 wheel combination locks GR2M with spyproof dial.
- Contacts for installation of alarm hook-up.
- Additional alarm protection on fascia.
- ULC listed night depository head, (see DWG #PB-451).

#### OPTIONAL EQUIPMENT

- ⚠
- Pre-wiring two circuits for alarm system to protect body and door of the receiving chest.
  - 2 or 3 movements timelock.
  - Wallets & envelopes functions.
  - Customer engraving on outside fascia.
  - 2-4 wheel combination lock (indirect drive).
  - Head trap #SDD-1, (see DWG #PB-482).
  - Extra head keys.



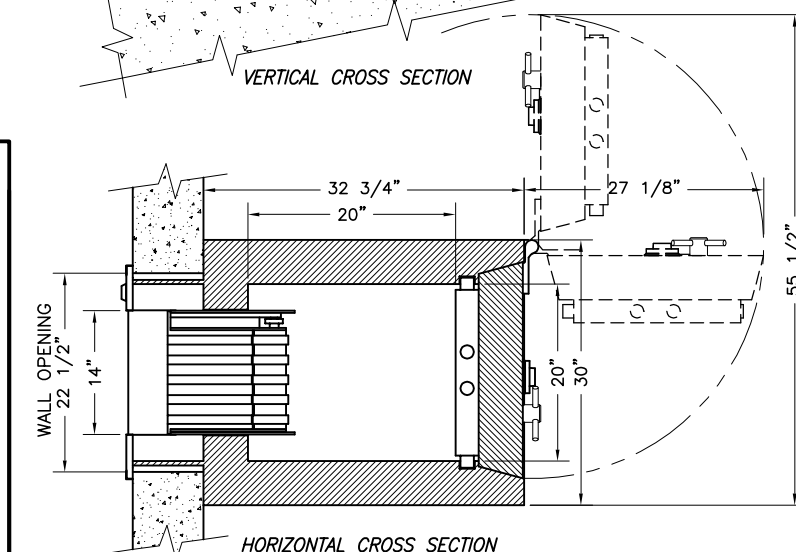
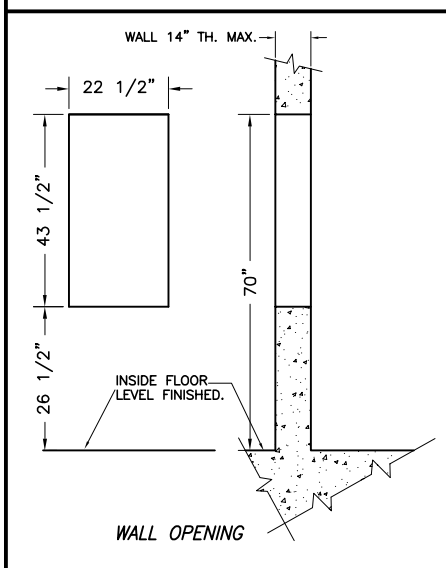
MODELS	weight C1	weight C2	Cubic Capacity
SND 25 head keys	3580 lbs.	3780 lbs.	5,9

6 SIDED TORCH &  
TOOL PROTECTION.

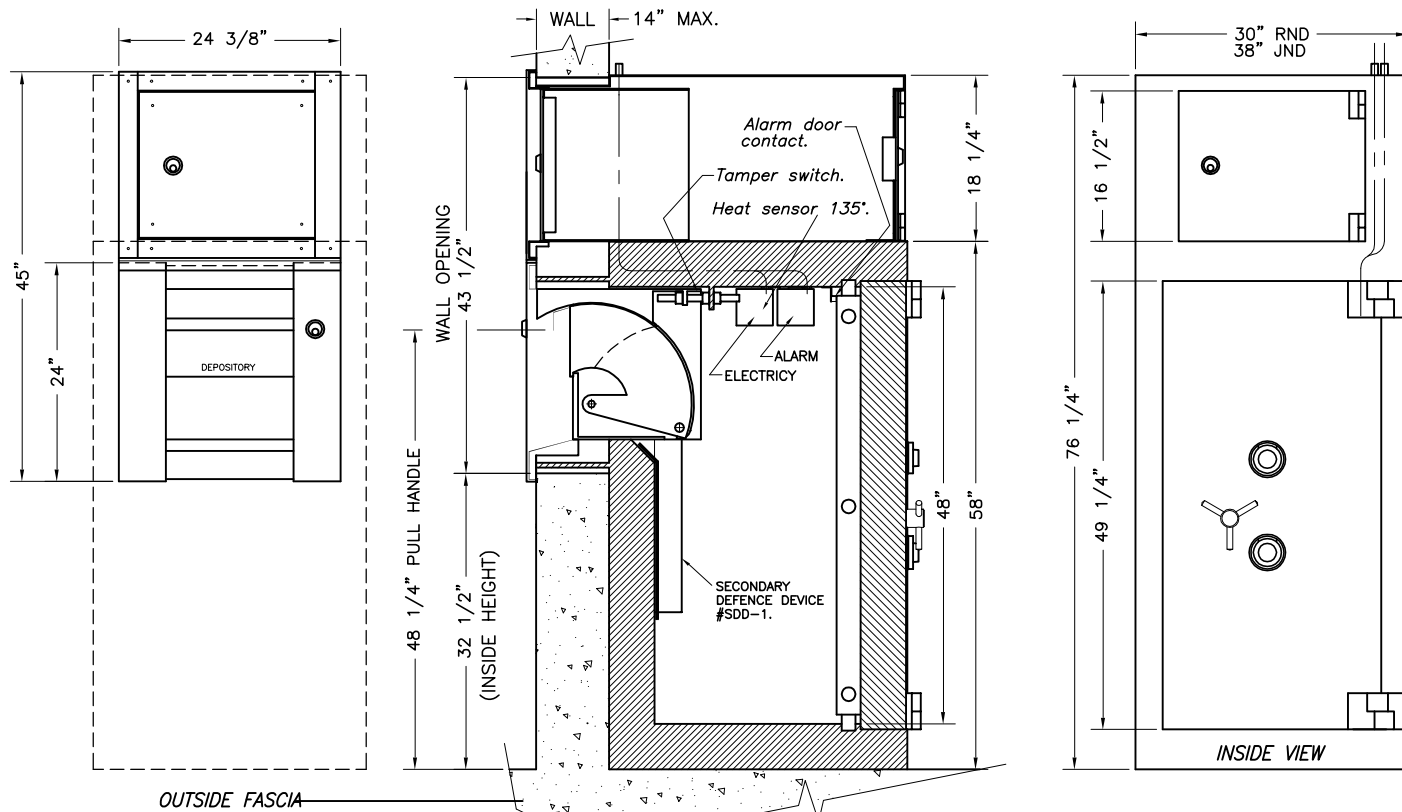


CLASS C1 (15 min.)  
CLASS C2 (30 min.)

		<b>TITLE</b> NIGHT DEPOSITORY c/w CLEARING SAFE.	
		<b>APPLICATION</b> ULC #S330-93. CLASS C1 & C2.	
<b>DATE</b> 28 09 98		<b>DRAWN BY</b> R M	<b>APP ED BY</b> SCALE 3/32 = 1
<b>PART NO</b> SND C1 & C2		<b>DRAWING NO</b> PB 593	



4	07 06 05	DOOR SWING WAS MODIFIED.	RM
3	30 08 01	DOOR SWING ADDED	RM
2	30 08 01	2 LOCKS GR2M WAS 2-4 WHEEL	RM
1	07 04 99	ADD. (PRE WIRING) OPT. EQU.	RM
NO	DATE	REVISION	BY



NIGHT DEPOSITORY MODELS RND-C1 or C2  
JND-C1 or C2  
c/w CLEARING SAFE.

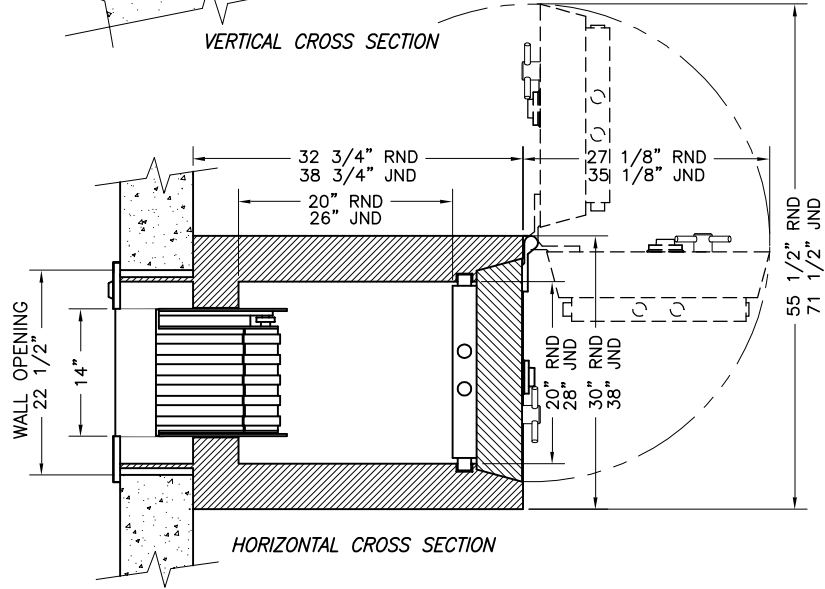
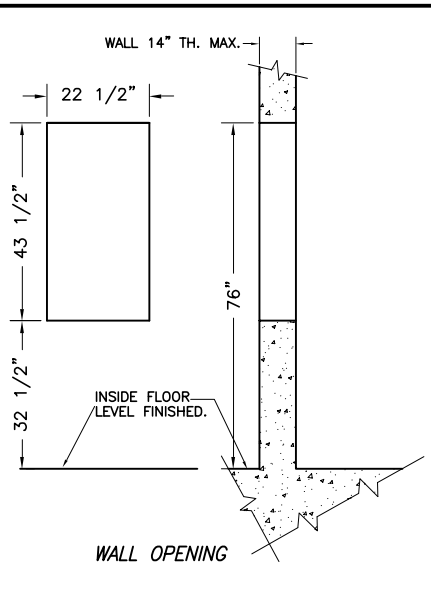
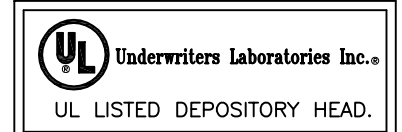
#### CHARACTERISTICS

- Unit for wallet deposits.
- The large capacity bag deposit compartment is exposed only when the required key has operated the lock in the depository frame.
- Anti-fishing device.
- Exterior fascia with stainless steel finish.
- Outside lighting system.
- The door and walls of receiving chest are 5" thick, steel & alloy.
- Door of receiving chest is equipped with 2-4 wheel combination locks GR 2M with spyproof dial.
- Contacts for installation of alarm hook-up.
- Additional alarm protection on fascia.
- ULC listed night depository head, (see DWG #PB-451).

#### OPTIONAL EQUIPMENT

- Pre-wiring two circuits for alarm system to protect body and door of the receiving chest.
- 2 or 3 movements timelock.
- Wallets & envelopes fonctions.
- Customer engraving on outside fascia.
- 2-4 wheel combination lock (indirect drive).
- Head trap #SDD-1, (see DWG #PB-482).
- Extra head keys.

MODELS	weight C1	weight C2	Cubic Capacity
RND 50 head keys	4100 lbs.	4400 lbs.	11.1
JND 100 head keys	5500 lbs.	5750 lbs.	20.2

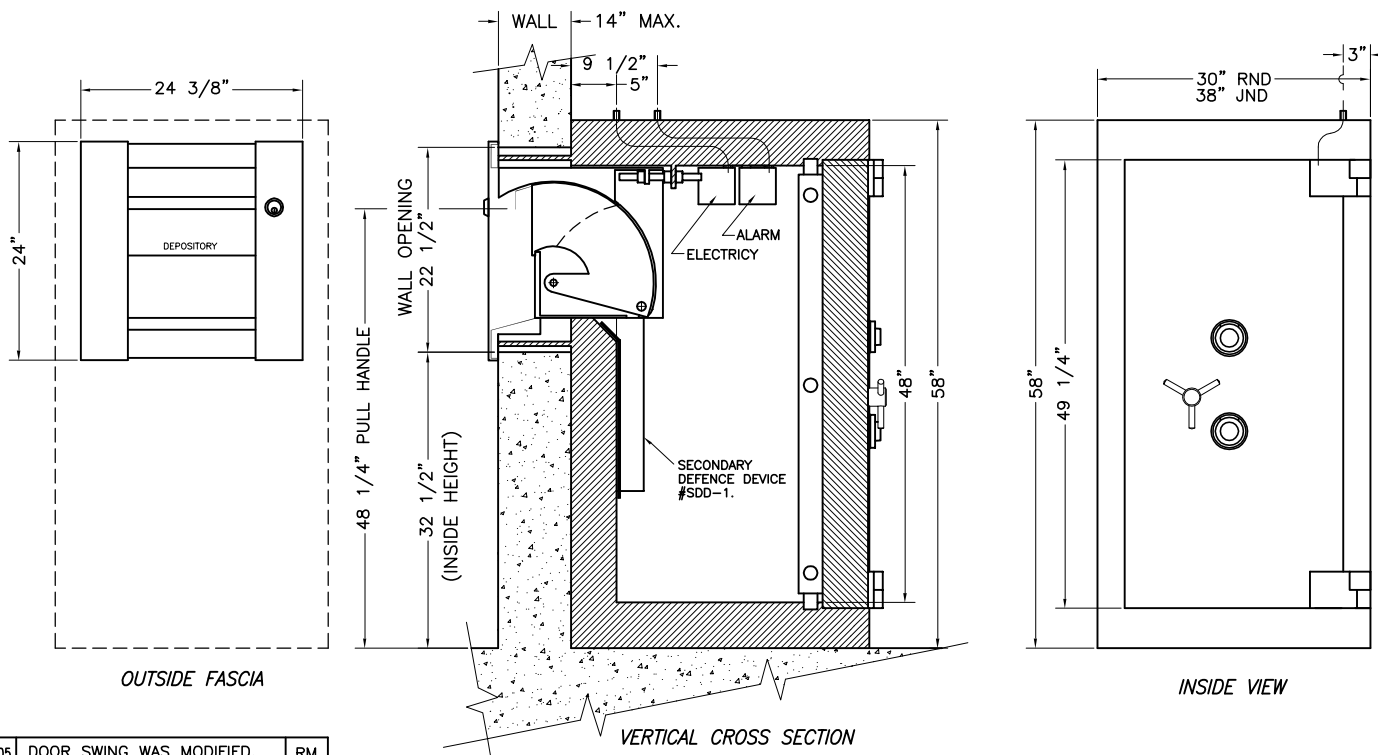


6 SIDED TORCH &  
TOOL PROTECTION.



CLASS C1 (15 min.)  
CLASS C2 (30 min.)

4	09 06 05	DOOR SWING WAS MODIFIED.	RM
3	14 08 01	DOOR SWING ADDED	RM
2	14 08 01	2 locks GR2M was 2-4 wheel	RM
1	07 04 99	ADD. (PRE WIRING) OPT. EQU.	RM
NO	DATE	REVISION	BY
<div> <div> <p>TITLE NIGHT DEPOSITORY c/w CLEARING SAFE.</p> <p>APPLICATION ULC #S330-93. CLASS C1 &amp; C2.</p> </div> </div>			
DATE	24 09 98	DRAWN BY R M	APP ED BY SCALE 3/32 = 1
PART NO	DRAWING NO PB 592		



# NIGHT DEPOSITORY MODELS RND-C1 or C2 JND-C1 or C2

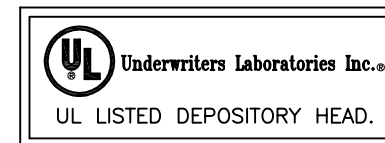
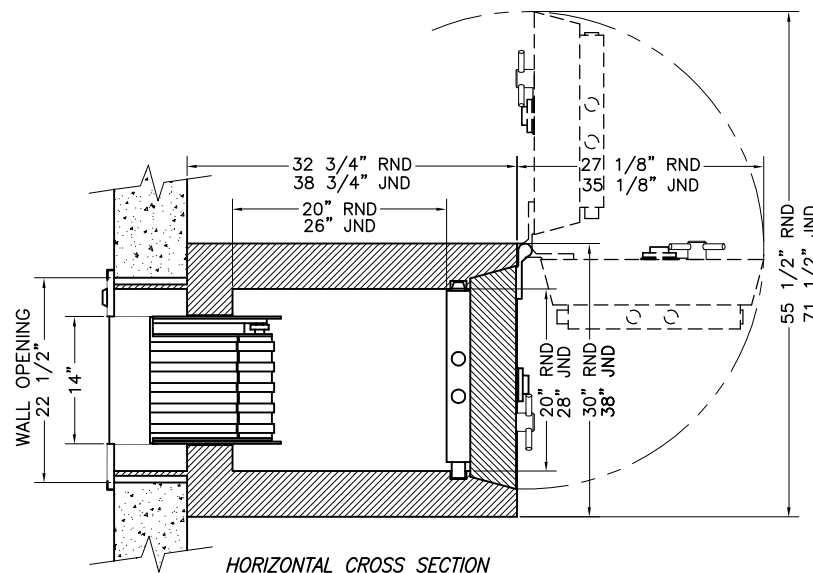
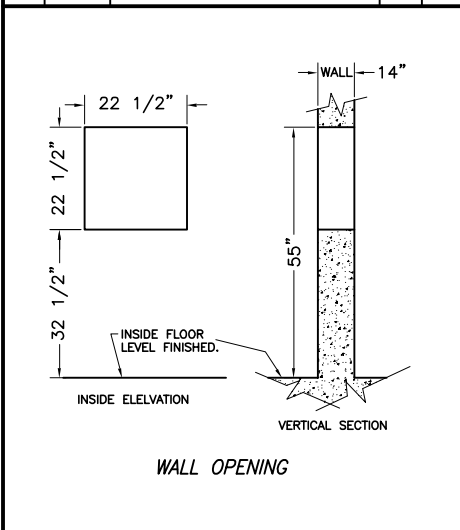
## CHARACTERISTICS

- Unit for wallet deposits.
- The large capacity bag deposit compartment is exposed only when the required key has operated the lock in the depository frame.
- Anti-fishing device.
- Exterior fascia with stainless steel finish.
- Outside lighting system.
- The door and walls of receiving chest are 5" thick, steel & alloy.
- Door of receiving chest is equipped with 2-4 wheel combination locks GR2M with spyproof dial.
- Contacts for installation of alarm hook-up.
- Additional alarm protection on fascia.
- ULC listed night depository head, (see DWG #PB-451).

## OPTIONAL EQUIPMENT

- △ - Pre-wiring two circuits for alarm system to protect body and door of the receiving chest.
- 2 or 3 movements timelock.
- Clearing safe #CSTR (see DWG #PB-500).
- Wallets & envelopes functions.
- Customer engraving on outside fascia.
- 2-4 wheel combination lock (indirect drive).
- Head trap #SDD-1, (see DWG #PB-482).
- Extra head keys.

5	07 06 05	DOOR SWING WAS MODIFIED.	RM
4	30 08 01	DOOR SWING ADDED	RM
3	30 08 01	2 locks GR2M was 2-4 wheel	RM
2	07 04 99	ADD. (PRE WIRING) OPT. EQU.	RM
1	26 05 97	TXT ADDED	RM
NO	DATE	REVISION	BY



MODELS	weight C1	weight C2	Cubic Capacity
RND 50 head keys	3900 lbs.	4200 lbs.	11.1
JND 100 head keys	5260 lbs.	5500 lbs.	20.2

6 SIDED TORCH &  
TOOL PROTECTION.



CLASS C1 (15 min.)  
CLASS C2 (30 min.)

		TITLE NIGHT DEPOSITORY	
		APPLICATION ULC #S330-93. CLASS C1 & C2.	
DATE 18 02 97		DRAWN BY RM	APP ED BY SCALE 3/32 = 1
PART NO		DRAWING NO PB 525	